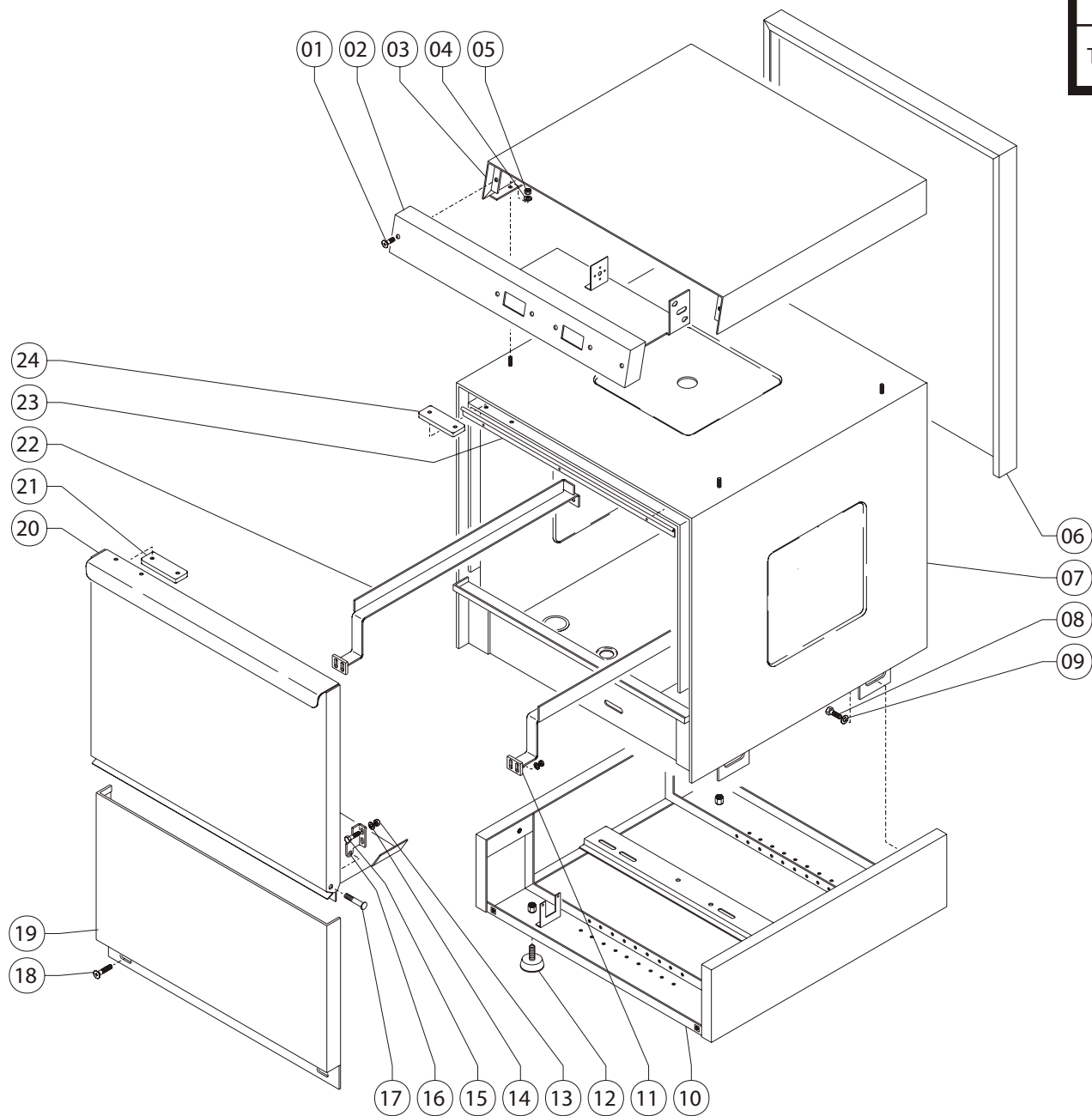


KORAL 205-206-207-208

TAV.01

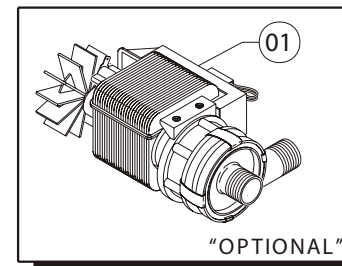
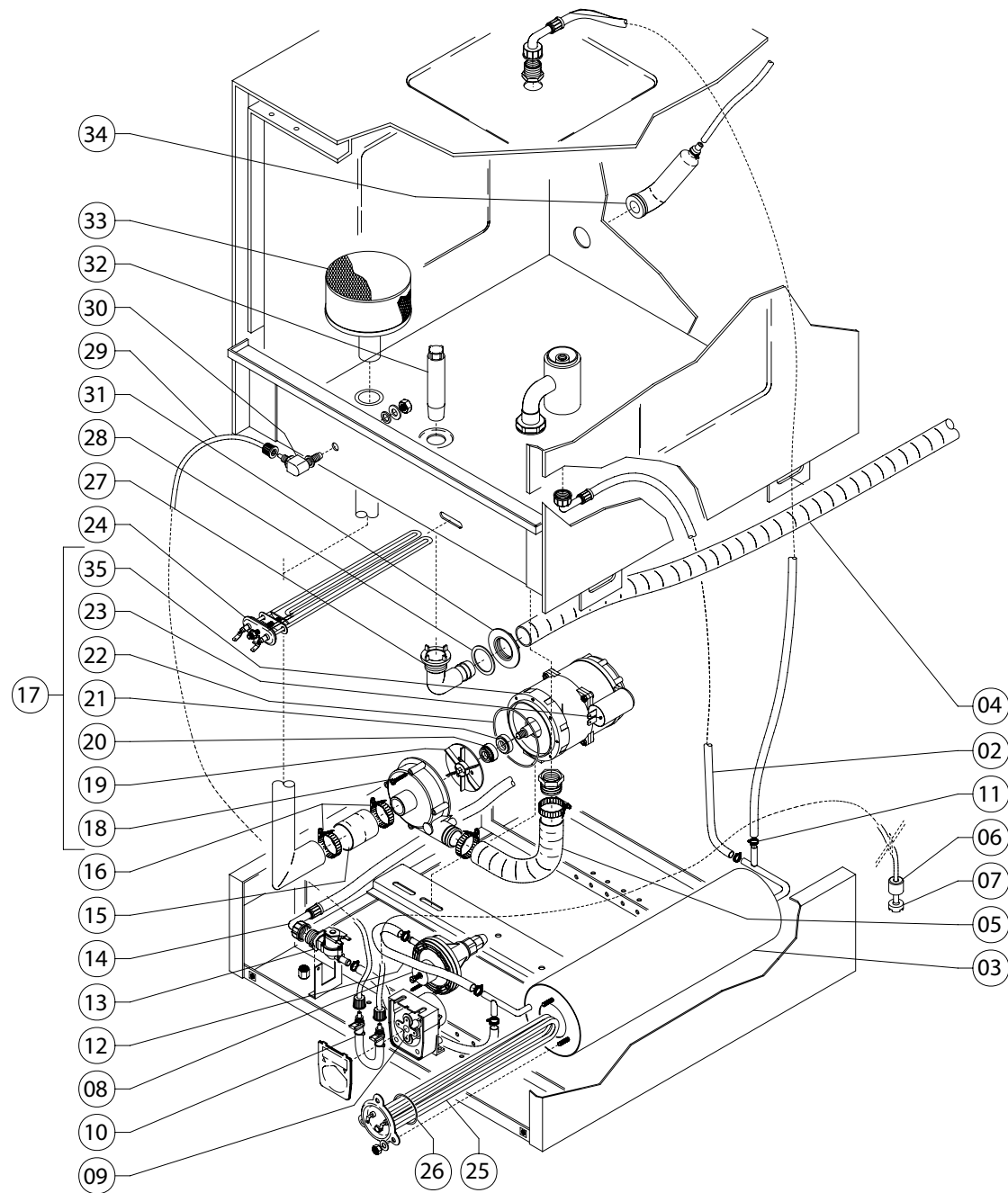
SRUTTURA



KORAL 205-207-208

TAV.02

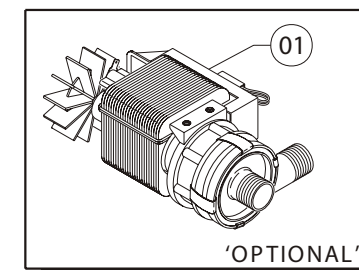
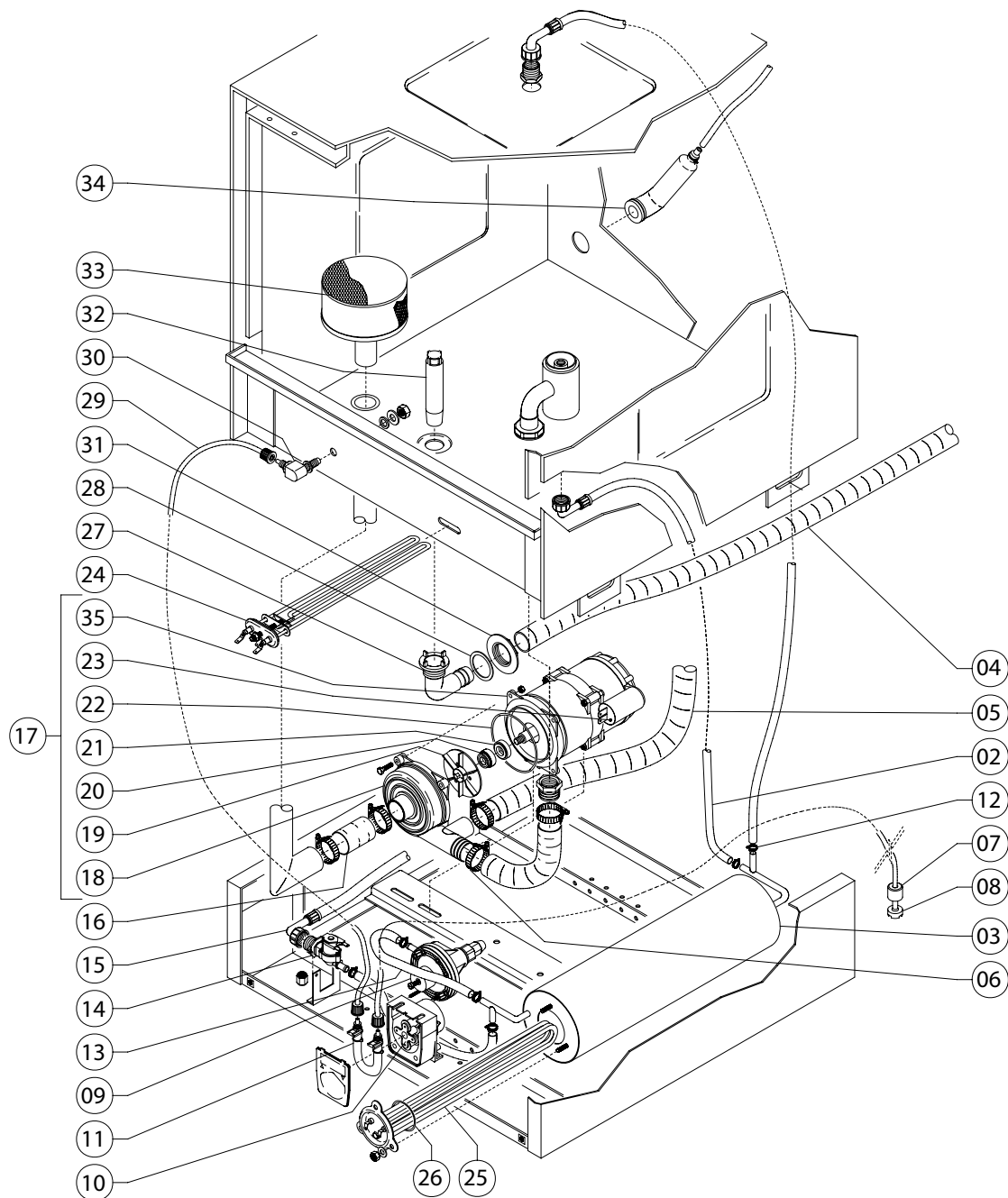
GRUPPO POMPA

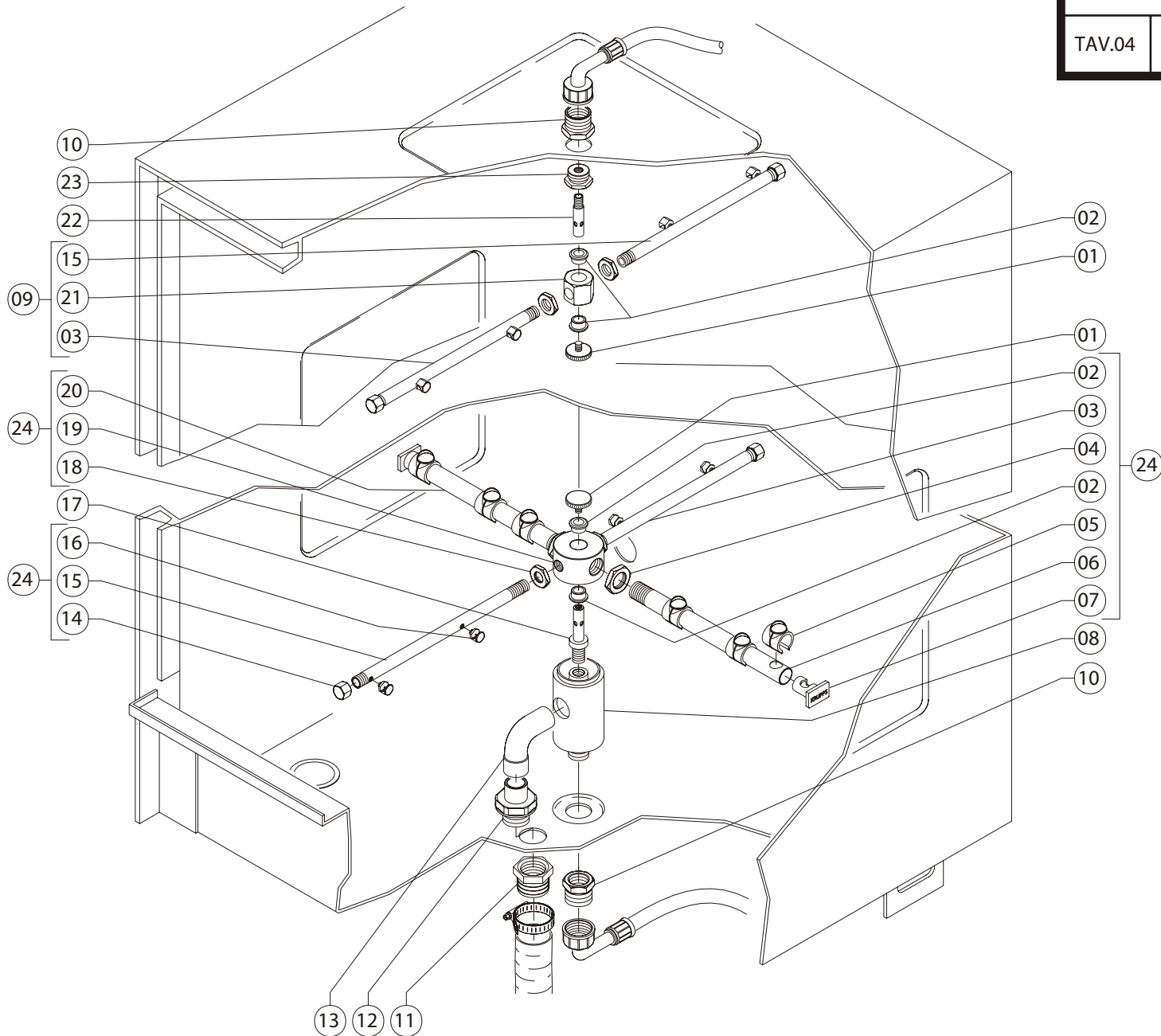


KORAL 206

TAV.03

GRUPPO POMPA

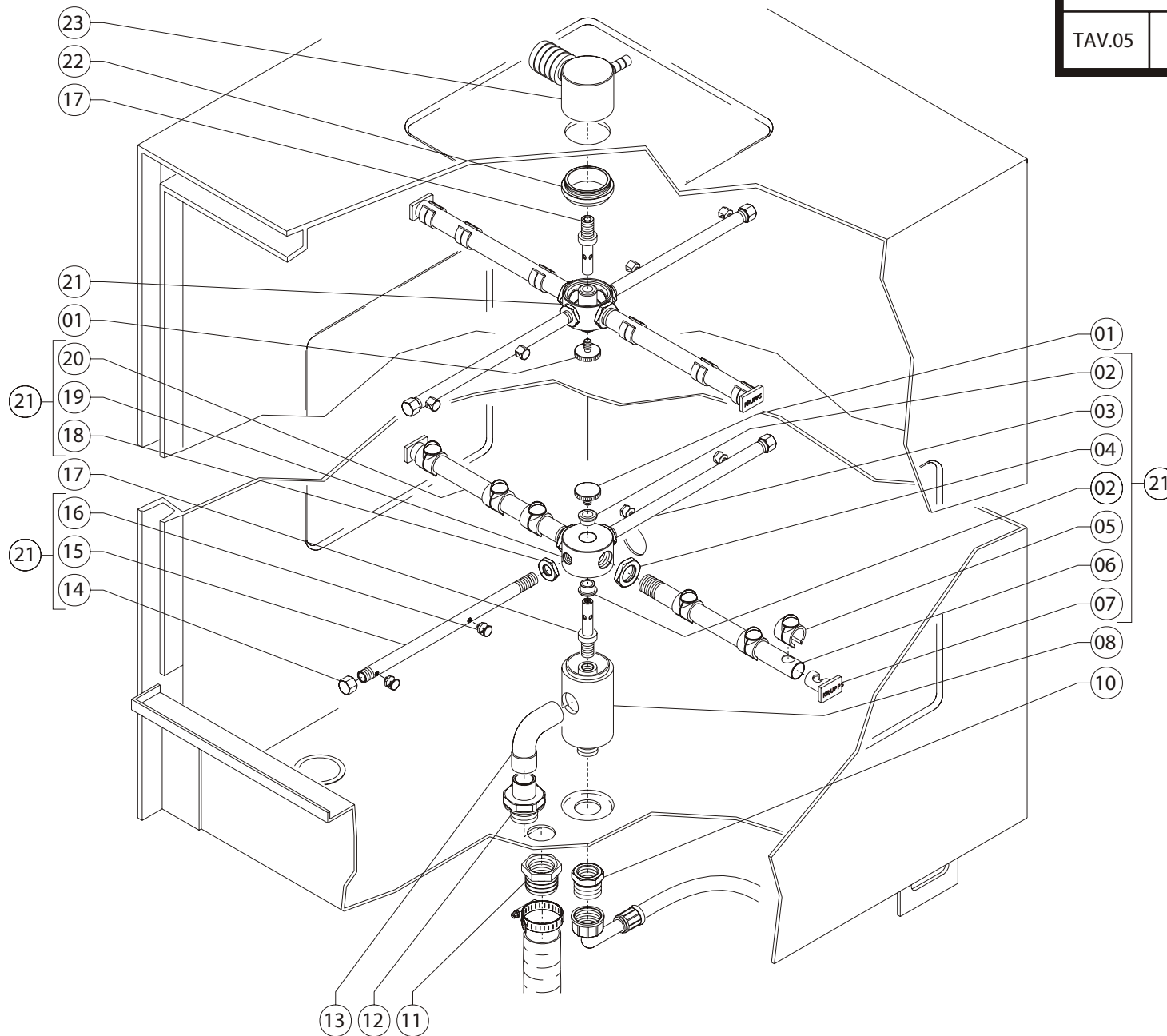




KORAL 206

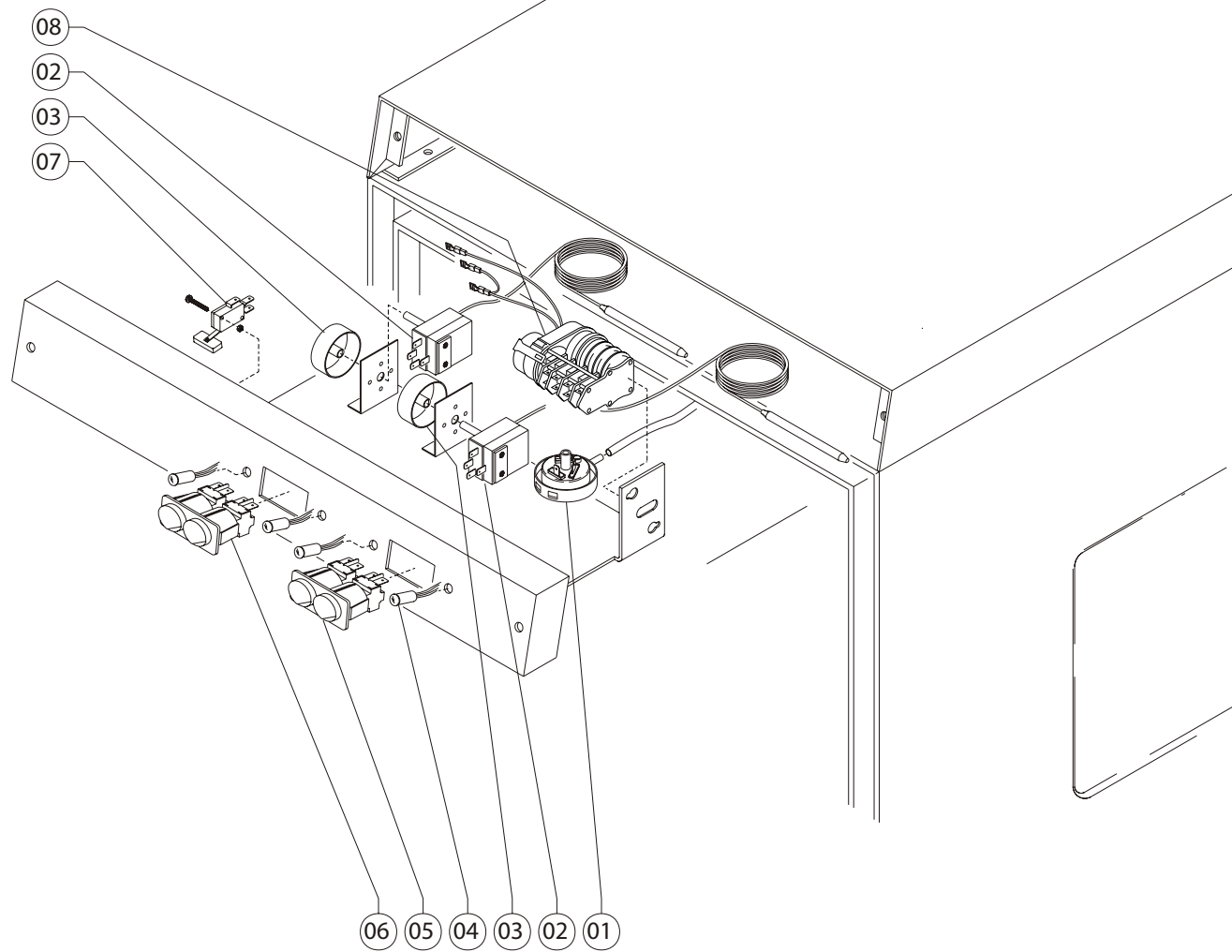
TAV.05

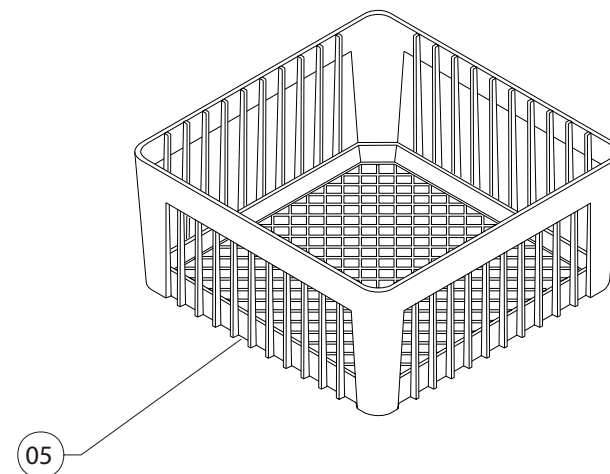
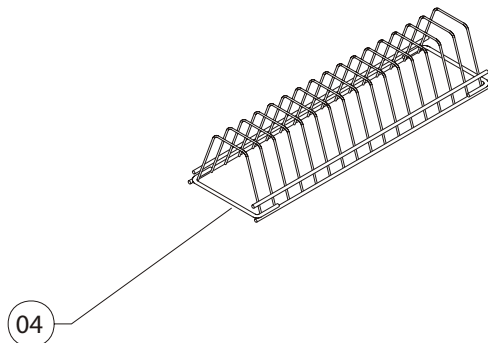
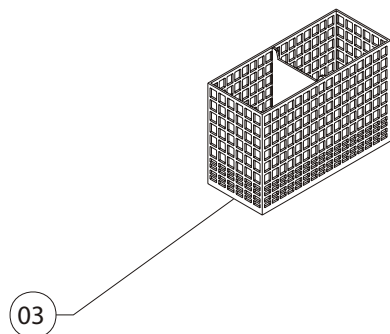
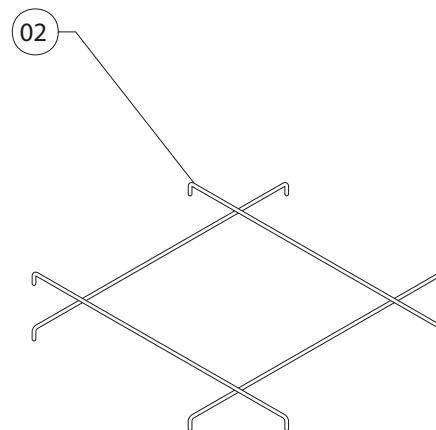
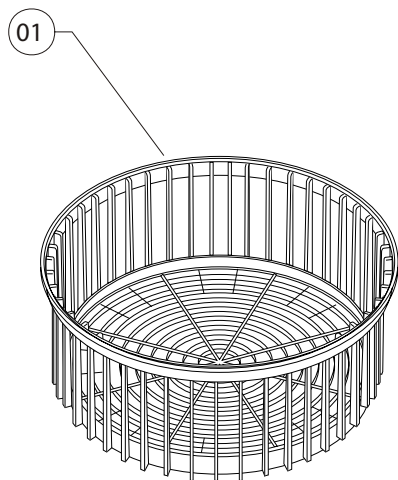
GIRANTE



TAV.
5DATA - NOV. 07
Revisione - 03

POS	CODICE MODELLO: - 206 - -	DESCRIZIONE	DESCRIPTION	DESCRIPTION	BESCHREIBUNG	Q.TY
1	104040	Tappo inox zigrinato	Knurled stainless steel tap	Bouchon inox moleté	Gerändelter Deckel aus Edelstahl	2
2	104100	Bussola carbografite picc. ø14mm	Small carbon-graph. bush, 14mm ø	Petite douille carbographe ø14 mm	Kleine Karbographitbuchse ø14 mm	4
3	207060	Tubo risciacquo inox dx completo	Complete right-hand stainless steel rinse pipe	Tuyau rinçage inox droit complet	Nachspülschlauch aus Edelstahl komplett für rechts	2
4	104080	Dado fissaggio tubo lavante ø18x1	Fixing nut for wash pipe, ø18x1	Ecrou fixation tuyau lavant ø18x1	Mutterschraube zur Befestigung vom Spülschlauch ø18x1	4
5	104020	Getto lavante in plastica	Plastic washing spout	Jet lavant en plastique	Spüldüse aus Plastik	12
6	207070	Tubo lavante inox dx completo	Complete right-hand stainless steel washing pipe	Tuyau lavant inox droit complet	Spülschlauch aus Edelstahl komplett für rechts	2
7	104030	Tappo lavante in plastica	Plastic washing tap	Bouchon lavant en plastique	Spüldeckel aus Plastik	4
8	104120	Corpo fisso centrale ø50 mm	Central fixed body, ø 50mm	Corps fixe central ø50 mm	Zentrales fixes Gehäuse ø50 mm	1
10	104221	Riduzione ottone da 1/2G a 3/4G	Reduction, from 1/2G to 3/4G	Réduction de 1/2G à 3/4G	Adapterstück aus von 1/2G auf 3/4G Zoll	1
11	104200	Raccordo portagomma lavante ø32 mm 3/4G/F	Wash pipe holding joint ø,32 mm 3/4G/F	Raccord porte tuyau lavant ø32 mm 3/4G/F	Anschluß Halterung Spülschlauch ø36 mm 3/4G/F	1
12	104181	Codolo raccordo in inox 3/4G	Inox shaft joint, 3/4G	Extrémité raccord en inox	Inoxendstück für Anschluß 3/4G Zoll	1
13	104170	Curva 90°C M/F per corpo ø50mm	M/F bend for body,	Coude 90° M/F pour corps ø 50 mm	90°-Kurve mit beidseitigem M/F Innengewinde für Gehäuse ø 50 mm	1
14	104010	Tappo tubo risciacquo passo 12x1	Rinsing pipe tap, step 12x1	Bouchon tuyau rinçage pas 12x1	Deckel Nachspülschlauch Größe 12x1	4
15	207061	Tubo risciacquo inox sx completo	Complete left-hand stainless steel rinsing pipe	Tuyau de rinçage inox gauche complet	Nachspülschlauch aus Edelstahl komplett für links	2
16	104000	Getto di risciacquo in ottone	Brass rinsing spout	Jet de rinçage en laiton	Nachspüldüse aus Messing	8
17	104060	Perno inox con filetto M12x0,75	Threaded stainless steel pin, M12x 0.75	Goujon inox avec filet M12x0,75	Gewindestift aus Edelstahl M12x 0,75	2
18	104090	Dado fissaggio tubo risciacquo ø12x0,75	Nut for fixing rinsing pipe, ø12x0.75	Ecrou de fixation tuyau de rinçage ø12x0,75	Mutterschraube zur Befestigung vom Nachspülschlauch ø12x0,75	4
19	104130	Testa girante ø50 mm	Rotor head, ø50 mm	Tête roue ø50 mm	Kopf Dreharm ø50 mm	2
20	207071	Tubo lavante inox sx completo	Complete left-hand stainless steel washing pipe	Tuyau lavant inox gauche complet	Spülschlauch aus Edelstahl komplett für links	2
21	207850	Girante lavaggio risciacquo completa di bussole	Wash and rinse rotor complete with bush	Roue lavage et rinçage avec douille	Dreharm Spülen und Nachspülen komplett mit Buchsen	2
22	104270	Ghiera filettata per corpo fisso superiore	Threaded ring nut for upper fixed body	Frette filettée pour corps fixe sup.	Nutmutter für oberes fixes Gehäuse	1
23	104260	Corpo fisso superiore	Upper fixed body	Corps fixe supérieur	Oberes fixes Gehäuse	1



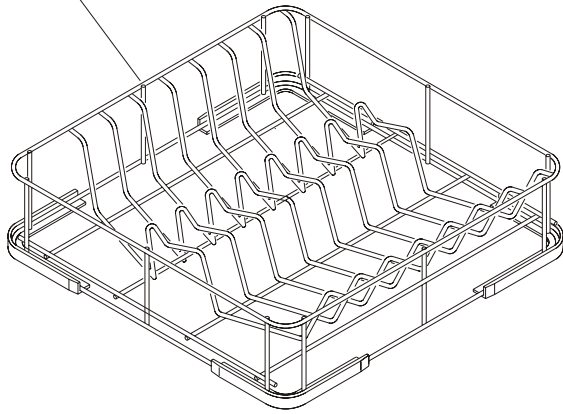


KORAL 208-208 LS

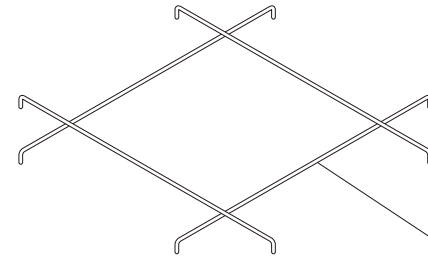
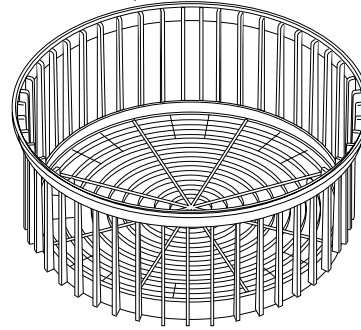
TAV.08

CESTELLI

01

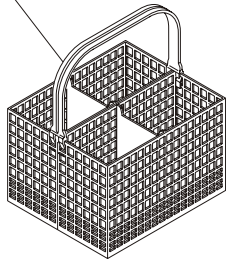


02

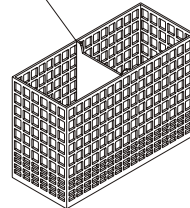


03

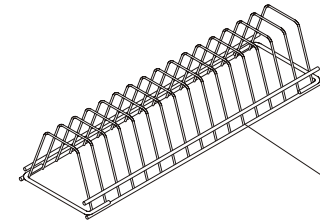
04



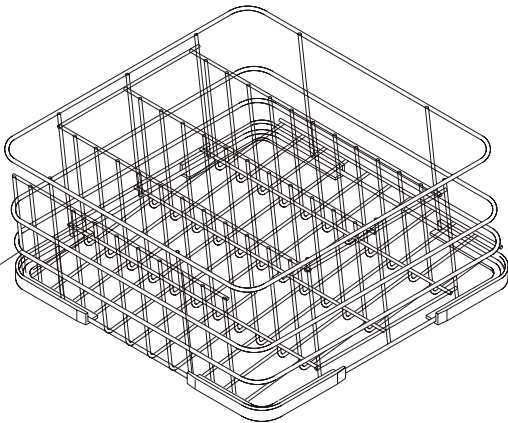
05



06



07



08

